

IGNOU | BCA

2023-2024

FREE

SOLVED

ASSIGNMENT




All In One

MCS-014

System Analysis and Design

Prepared by



 730-339-3555

www.ignoustudymentor.com

@ism_ignoustudymentor_





ISM - IGNOU STUDY MENTOR

 Youtube Channel and

Get a Complete Solution
for IGNOU Students

SUBSCRIBE

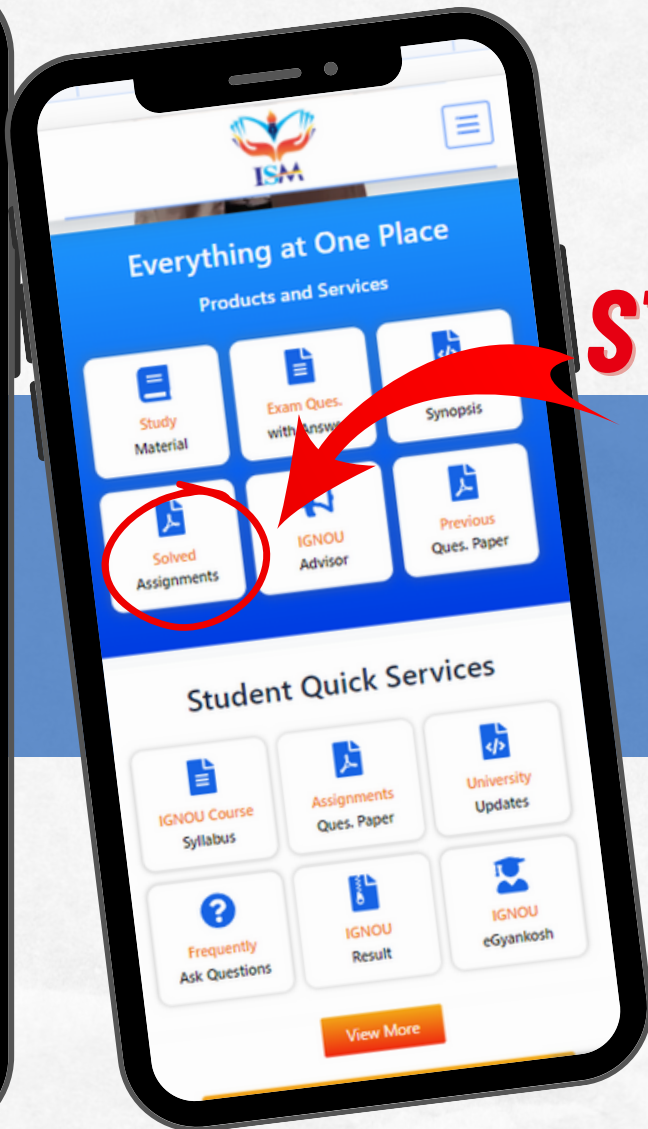
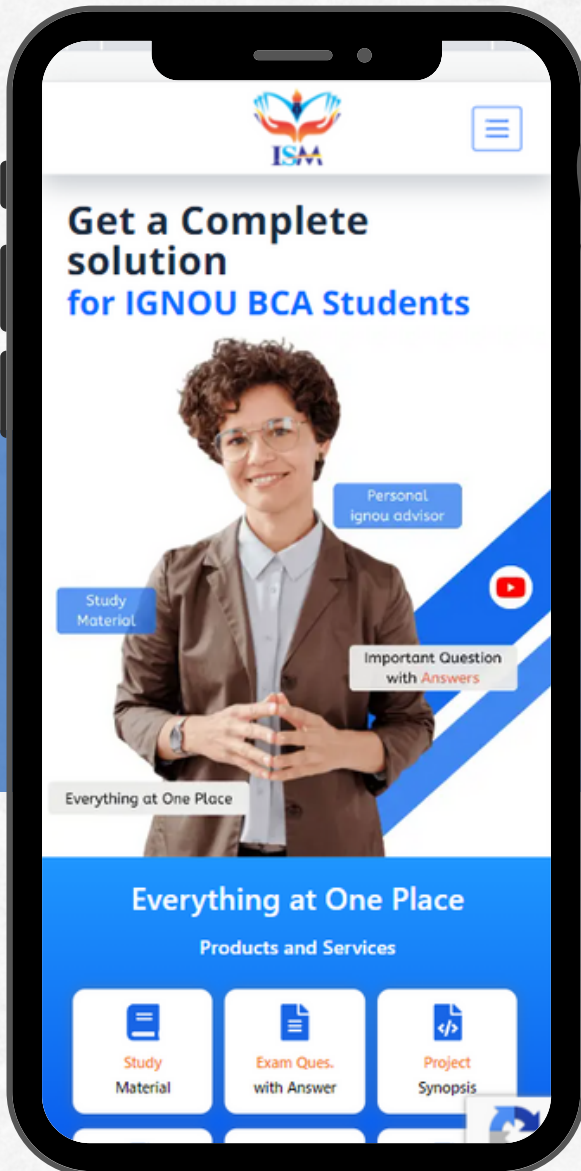


www.ignoustudymentor.com



STEP 1

 www.ignoustudymmentor.com 



STEP 2



Visit us: www.ignoustudymmentor.com



730-339-3555



MCS-014
SYSTEM ANALYSIS AND DESIGN
[SEM-3]



[Click to Join](#)

Ques.Q3.Draw ERD for a Student Admission System. Make necessary assumptions.

Ans. ER Diagrams Symbols & Notations

Entity Relationship Diagram Symbols & Notations mainly contains three basic symbols which are rectangle, oval and diamond to represent relationships between elements, entities and attributes. There are some sub-elements which are based on main elements in ERD Diagram. ER Diagram is a visual representation of data that describes how data is related to each other using different ERD Symbols and Notations.

Following are the main components and its symbols in ER Diagrams:

Rectangles: This Entity Relationship Diagram symbol represents entity types

Ellipses: Symbols represent attributes

Diamonds: This symbol represents relationship types

Lines: It links attributes to entity types and entity types with other relationship types.

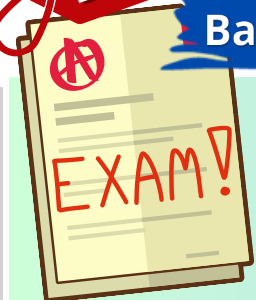
Primary key: attributes are underlined

Double Ellipses: Represent multi-valued attributes

ISMA



Baaki bche हुए Questions के Answers YouTube पर Milege



IGNOU SOLVED GUESS PAPER

Get IGNOU Important Questions with Answer, Video, PDF.

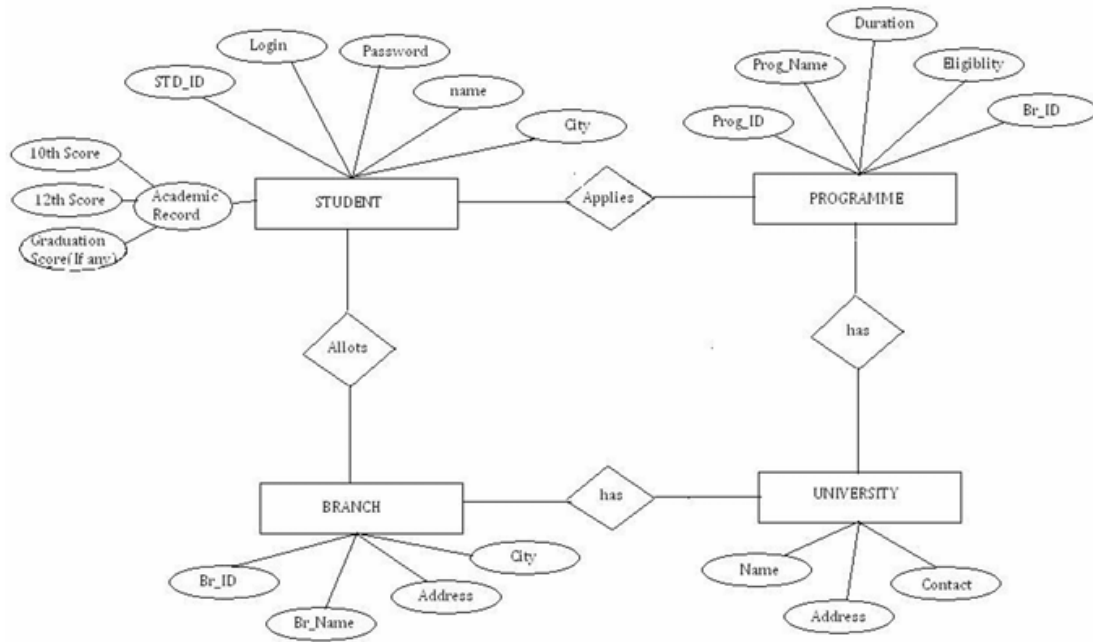


MCS-014

SYSTEM ANALYSIS AND DESIGN [SEM-3]



Join for Doubt



FREE

CLICK HERE

Baaki bche हुए Questions के Answers YouTube पर Milege



IGNOU SOLVED ASSIGNMENTS

Get IGNOU Solved Assignments for all IGNOU courses





Follow :

ism_ignoustudymentor_

Join Telegram Group :

ism_ignoustudymentor

 **Youtube Channel**

ISM - IGNOU Study MENTOR

Website

www.ignoustudymentor.com



730-339-3555

